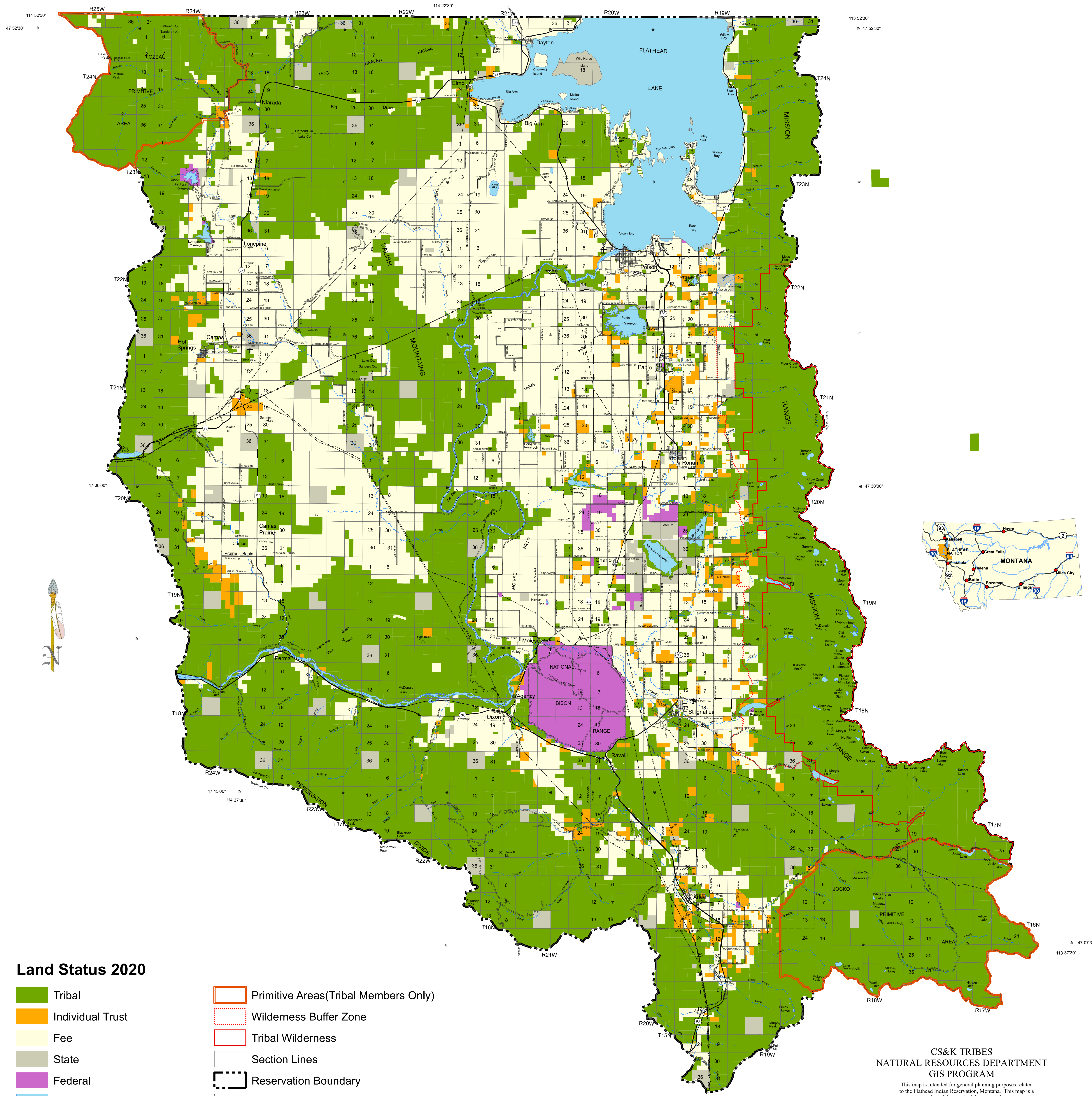


THE CONFEDERATED SALISH AND KOOTENAI TRIBES OF THE FLATHEAD NATION



Land Status 2020

- | | |
|--|--|
| Tribal | Primitive Areas(Tribal Members Only) |
| Individual Trust | Wilderness Buffer Zone |
| Fee | Tribal Wilderness |
| State | Section Lines |
| Federal | Reservation Boundary |
| Water | County Boundary |
| Roads | Power Transmission Lines |
| Primary Hard Surface Roads | Railroads |
| Secondary Hard Surface Roads | Lookout Towers |
| Light Duty Roads | Airports |
| | Marinas |
| | Land Features |



CS&K TRIBES NATURAL RESOURCES DEPARTMENT GIS PROGRAM

This map is intended for general planning purposes related to the Flathead Indian Reservation, Montana. This map is a representation of the physical features, infrastructure, and land ownership boundaries. This map should not be relied upon to establish legal title, boundary lines or locations of improvements.

Much of the land portrayed on this map is tribally owned and is closed or has restricted entry and travel rules. Please observe all tribal, local, and agency regulations/ordinances. These products are provided as is, without warranty. In no event are the Tribes, or any of its entities liable for damages from the use of this product.

This product is subject to license and copyright limitations and further distribution or resale is prohibited.

This map was created from records and existing map sources, not from field surveys. Actual land status is maintained by the Confederated Salish & Kootenai Tribes, Titles and Records Pablo, Montana.

This map status is current as of 2020
Copyright (c) 1993, 2020 CS&K Tribes Natural Resources Department. All rights reserved.

Software: ESRI ARCMAP (ARCGIS) Version 10.6
Hardware: DELL Optiplex 9020
Plotter: Hewlett-Packard DesignJet 1055c